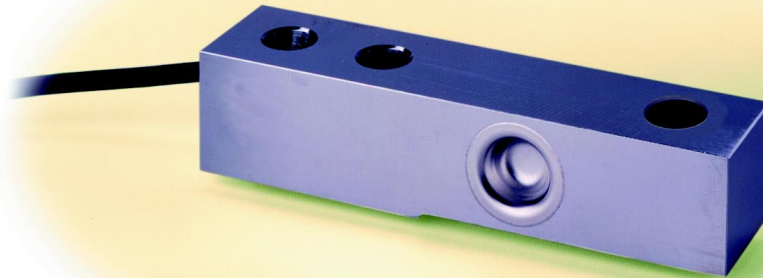




spectris group

The H35 is the latest introduction to the popular beam line. The H35 offers all stainless steel construction and integral mounting foot as well as dimensional and electrical interchangeability with several load cell manufacturers.

H35 beam load cell



H35 beam load cell technical data

Rated Capacity (lbs)	1K, 2.5K, 4K, 5K
Rated Output (mv/v)	3.0mv/v
Combined error due to non-linearity and hysteresis	.03%
Nonrepeatability (%)	0.01
Creep in 20 min. (%)	0.03
Zero Balance (%)	2.0
Compensated Temp. Range	+14°F to +104°F (-10 + 40°C)
Temp Effect: Output	.15%/100°F
Zero Balance	.25%/100°F
Terminal Resistance:	
Input (ohms min.)	350
Output (ohms)	350± 3
Excitation Voltage	10 Maximum VDC or 15 VAC rms
Insulation Resistance (megaohms min.)	5k
Max Load Safe (%)	100
Max. Load Ultimate (%)	300
Max Side Load, Safe (%)	150
Deflection at Rated Load (inches)	.01
Weight (lbs)	2.5lbs

Percentages relative to rated output, except as noted.
REQUEST CERTIFIED DRAWINGS BEFORE DESIGNING MOUNTINGS OR FIXTURES.
DIMENSIONS AND SPECIFICATIONS ARE SUBJECT TO CHANGE WITHOUT NOTICE.

- **Stainless steel construction**
- **3 mV/V output, 350 ohm bridge**
- **Hermetically sealed**
- **Available NTEP Certified, 91-030**



HBM, Inc.

19 Bartlett Street

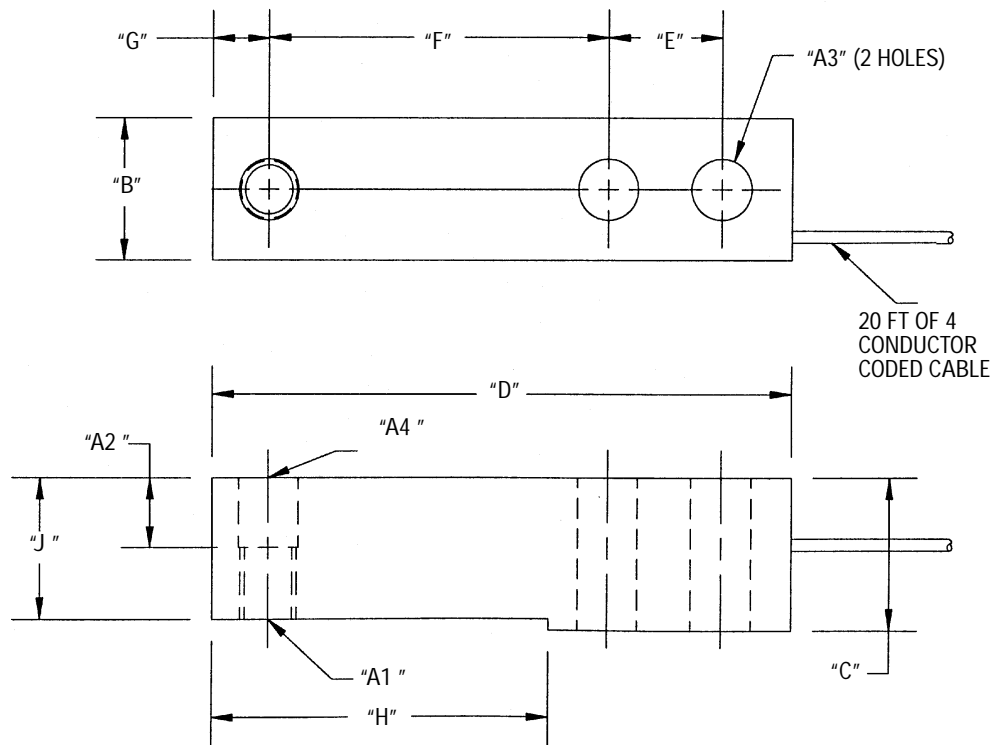
Marlboro, MA 01752

Tel: (508) 624-4500

Fax: (508) 485-7480

Website: www.hbminc.com

H35 beam load cell



RATED CAPACITY	A1	A2	A3	A4	B	C	D	E	F	G	H	J
1K-5K	1/2-20 UNF-2B	.62	.53	.53	1.21	1.19	5.12	1.00	3.00	.50	2.85	1.12

CABLE COLOR CODE	
+ EXC	GREEN
- EXC	BLACK
+ SIG	WHITE
- SIG	RED
SHIELD	YELLOW



spectris group

HBM, Inc.

19 Bartlett Street

Marlboro, MA 01752

Tel: (508) 624-4500

Fax: (508) 485-7480

Website: www.hbminc.com